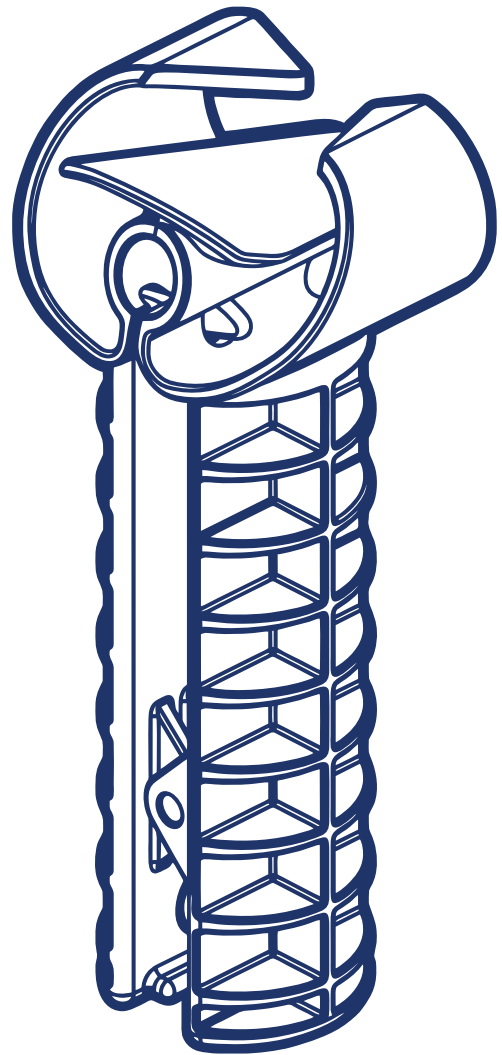
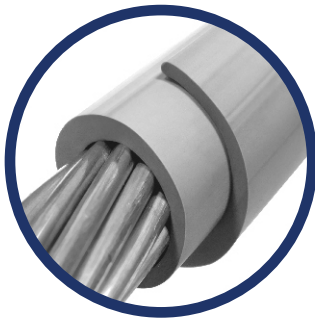


EEL SLIDER[®]

greyEEL[®]
CONDUCTOR COVER



The EEL Slider[®] tool is designed exclusively for the application of GreyEEL[®] conductor cover.

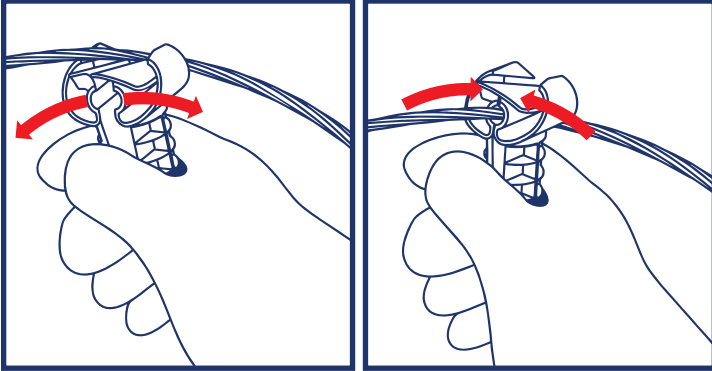
RELIAGUARD[®]

BETTER SOLUTIONS FOR POWER LINE PROTECTION

Phone 949.305.3311
Email orders@reliaguard.com
Web www.reliaguard.com

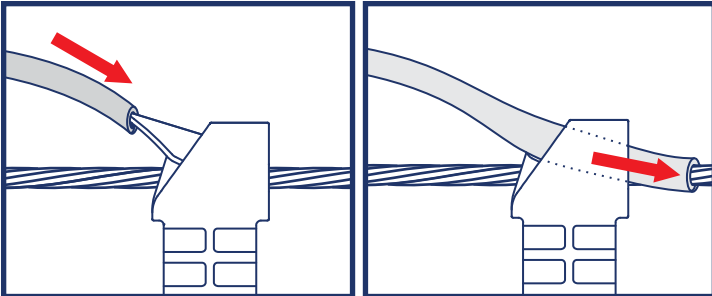
DIRECTIONS FOR USE

Users are to follow all applicable safety standards and regulations specified by the Operating Authority.

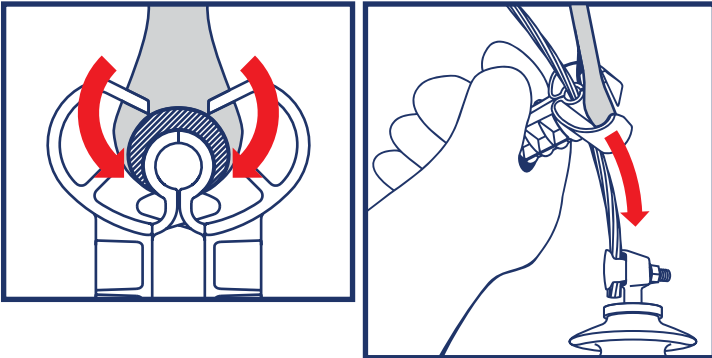


1. Squeeze bottom portion of handle to open then release to close tool around wire.

Pointed end of tool should face intended direction of application.

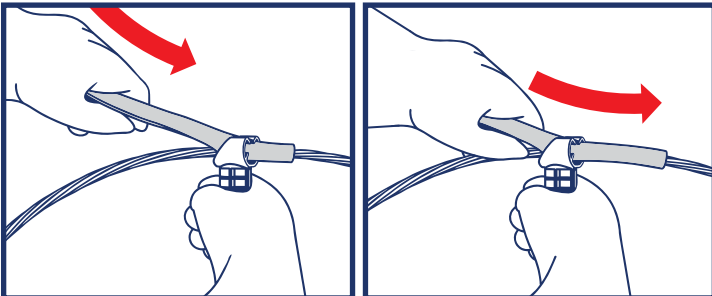


2. Feed GreyEEL® through pointed tip of tool

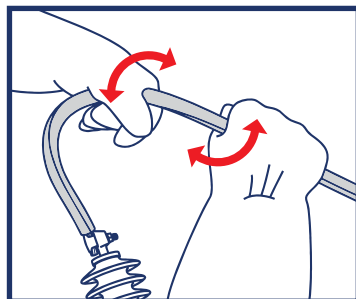


3. Ensure profile is centered on tool with sides rotated down equally

4. Slide tool and GreyEEL® down to starting point of application



5. Push approx 4-5 inches of GreyEEL® through tool at a time before repositioning hand to push more through. Verify frequently if profile is centered on tool.



6. Ensure profile is fully closed around wire as GreyEEL® is applied. Squeeze and rotate to set the seam.

RELIAGUARD®

BETTER SOLUTIONS FOR POWER LINE PROTECTION

Phone 949.305.3311
Email orders@reliaguard.com
Web www.reliaguard.com