

## RELIAWRAP POLE WRAP (RW – 30100; RW – 36036; RW - 36048)

ReliaWrap is a premium grade pole wrap formed from a 0.04" thick UV stabilized polymer. ReliaWrap is designed to be a barrier to prevent animals such as squirrels, racoons and other climbing animals from reaching energized structures. ReliaWrap also prevents destructive species such as woodpeckers from damaging poles.

### Better by Design

- Based on the 100 years of collective knowledge of the Reliaguard linemen who specialize in wildlife mitigation, Reliaguard product designs take into consideration all contact risk areas.
- ReliaWrap is cut to various sizes based upon the application a utility will be deploying.

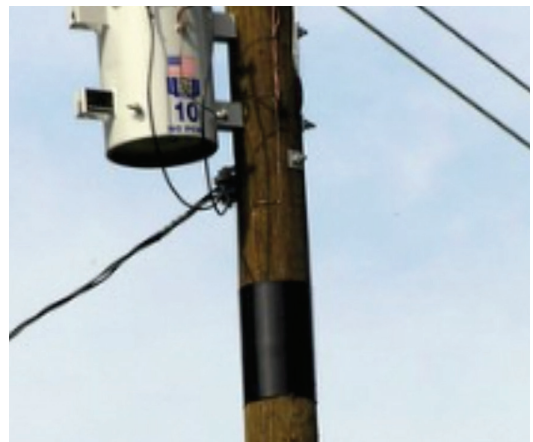
### Superior Material

- ReliaWrap is a UV stabilized Polymer
- Isolates climbing animals
- Protects wooden poles from woodpeckers
- UV-stabilized polymer specific gravity of 0.94 g/cc
- Provides a tensile yield of 4,490psi

### Ease of Installation

Power linemen and substation technicians like our products for the following features:

- ReliaWrap is fastened with nails or screws
- ReliaWrap will not rip or tear
- Packaged in 12 pre-cut sheets of 36"x36" and 36"x48" or 30"x100' roll



## Technical Features

Designed to prevent wildlife caused outages, these guards are tested for application on equipment up to 38kV.

Product #	Description / Size
RW-30100	ReliaWrap - 30" x 100' - Rolls
RW-36036	ReliaWrap -36 x 36 - pre-cut sheet*
RW-36048	ReliaWrap -36 x 48 - pre-cut sheet*

\* "Pre-Cut Sheet" packaged in quantities of 12

Material Properties	Results
UV - Stabilized Polymer Specific Gravity	0.94 g/cc
Tensile Yield	4490 psi
Elongation %	300 %

## Species at Risk:

Listed below are those specific animals that have been identified by the IEEE survey as known or potential sources of animal-related outages. (Source: IEEE 1264™-2015)

Animals	% Utilities Responding to IEEE Survey
Squirrels	90%
Birds	86%
Raccoons	57%
Snakes	46%
Cats	43%
Mice	30%
Rats	19%
Opossums	13%

## Fits the following equipment manufacturers' products:

- For Wooden Poles



Several other animals were identified by utilities as problematic. These animals are not major contributors, as none were reported by more than 5% of the utilities:

**Bats, deer, dogs, foxes, frogs, gophers, ground hogs, insects, lizards, moles, monkeys, pikas, rabbits, ring-tailed cats, skunks, weasels**